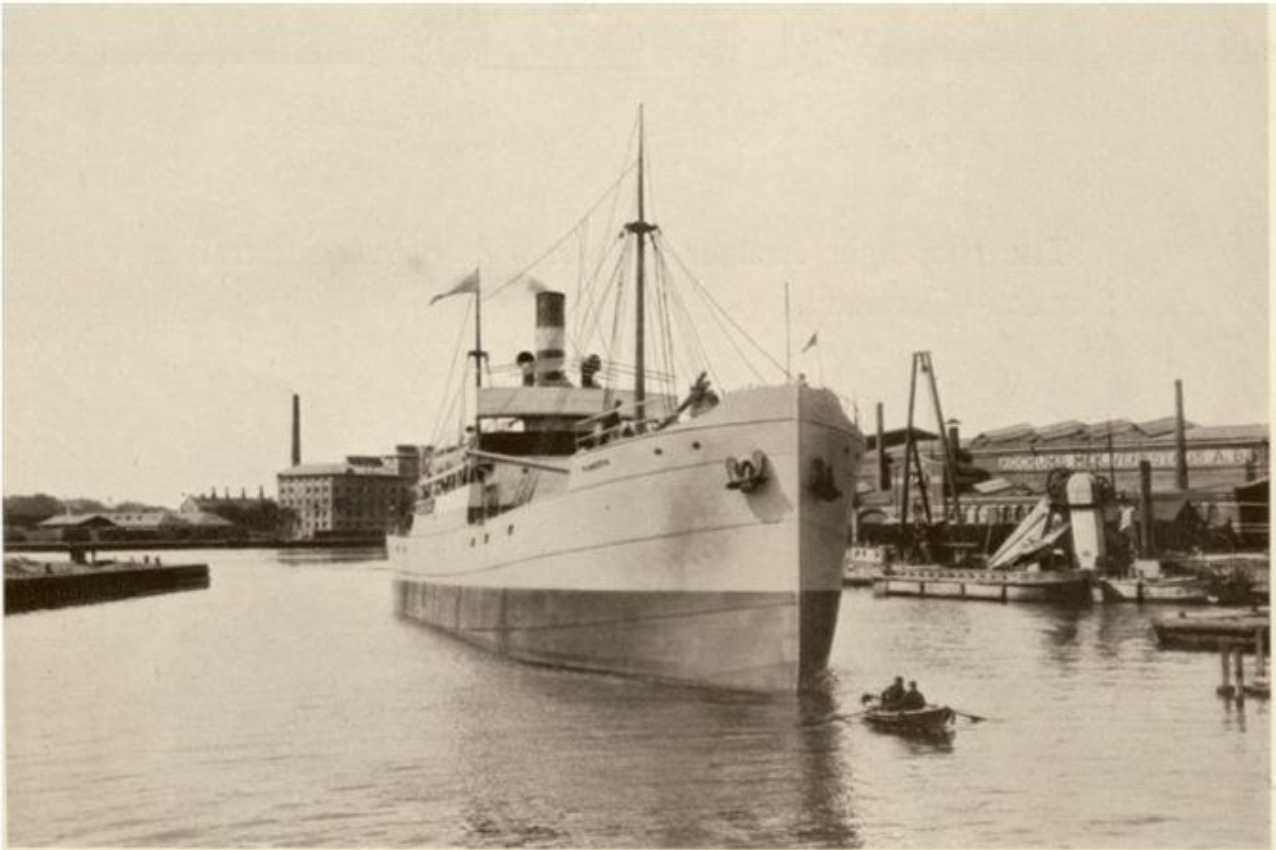


**Lastfartyget S/S Avesta (nr  
114, 1913)**

The illustration shows one of the steam-cargo-ships of 2200 tons d. w., built by us.

This ship is equipped with Triple-Expansion Engines 800 I. H. P. of our own make.

**Kommentar:** Fart. b.nr 114, S/S Avesta, Lastfartyg – ca 2200 dw  
Levererat 1913 till Red. AB Nordstjernen, Stockholm.  
Lägg märke till Hamnroddarna / BoN



Kockums: "The illustration shows one of the steam-cargo-ships of 2200 tons d. w., built by us. This ship is equipped with Triple-Expansion Engines 800 I.H.P. of our own make."

Lägg märke till hamnroddarna.

## Snabba fakta

- Nr: 114
- Art: s.s
- Namn: Avesta
- Typ: Lastfart
- Dw ton/Depl ton: 2183 dw
- Levererad 1913
- Fart Knop 9
- Effekt Hk/MW 720
- Beställare: Rederi AB Nordstjernan, Stockholm